

Using the Tascam US-224 with CEP 2.1

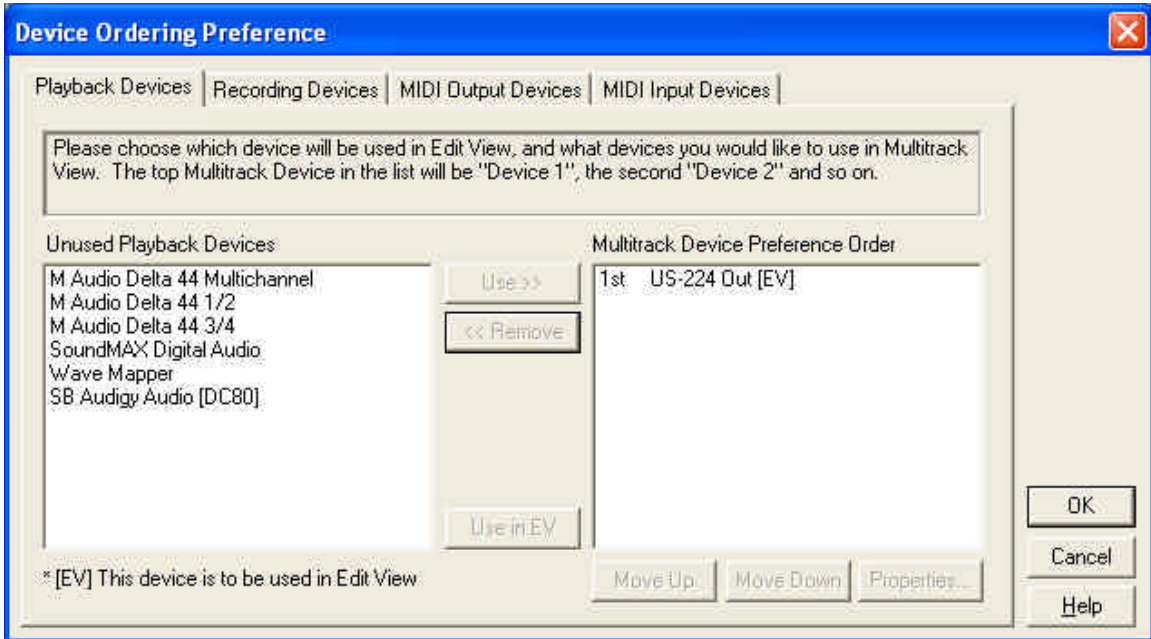


The Cool Edit Pro 2.1 update adds support for the Tascam US-224 USB surface controller/sound card device. Please note that you must be sure to have downloaded and installed the latest 2.1 (or later) update, since this device was not supported in CEP version 2.0. To see which version of Cool Edit Pro you are currently running, open your CEP and go to Help>About Cool Edit Pro. In the window that opens you should see the version number. If you have version 2.0, then it is suggested that you go to the download page of the Syntrillium web site and download the latest update and install it following the instructions provided.

<http://www.syntrillium.com/cep/>

There is no additional software or installation process required for CEP 2 to access the Tascam unit once the unit is properly installed in Windows. You should only need to power on the US-224 unit and then launch CEP. To follow are a few configuration settings for the Tascam US-224 within CEP.

Go to CEP's Options-Device Order dialog:



Here you can assign the US-224 analog input and output configuration. If you want to use the Tascam as your main sound card device, for example, you probably want to go to the Playback Devices tab and move the "US-224 Out" device to the right "Multitrack Device Preference Order" column and to the top of the list. Additionally, click on the "Use in EV" button to make this stereo output your Edit View playback device as well if desired.

Next, go to the Recording Device tab and do the same with the Tascam "US-224 A:B" input device if you want this to be your 'default' record device for Multitrack and Edit View.

Go to the Options-Device Preferences dialog:



In this dialog you want to select the US224 as the External Controller Device to make it the active surface controller for CEP 2.1

The following is a list of Tascam US-224 functions that are specific to Cool Edit Pro 2.1. Please also be sure to first become familiar with the basic operation of the Tascam unit by reading through your Tascam Owner's manual. For more information on the Tascam US-224 unit, please visit the Tascam web site at: www.tascam.com

Transport Controls



REW, F FWD, STOP, PLAY, RECORD - there are dedicated buttons for each of these on the unit's transport section. In addition, if you double-tap the << REW button it will place the cursor and view at the start of the session, file (in Edit View) or to next Cue to the left. Likewise, Double-tapping the >> FF button places the cursor and view to the end of the session, end of the file (in Edit View) or to the next Cue. A PAUSE function is available if you press the PLAY > button once during playback. To resume playback, press the PLAY > button once again. The Transport controls will function for both CEP's Multitrack and Edit View.

Mute/Solo Switches and LED's



Mute any track by using the MUTE button on the corresponding Tascam channel. Note that the SOLO button on the Tascam (to the right of the row of Track MUTE buttons) toggles the tracks' MUTE buttons between "Mute" and "Solo". There are indicator lights on each Channel to indicate which is active for Mute or Solo as well.

Record Arming



To toggle any track between "arm" and "disarm" for recording, hold down the REC button and simultaneously click the desired channel's SELECT button. The RECORD LED indicator glows red when the channel is armed for record. You can arm as many tracks as needed at any one time.

Panning



To access any track's Pan control in the CEP Multitrack, click and hold the Tascam SELECT button for the desired CEP track, then rotate the Tascam DATA WHEEL left or right to Pan the track output left or right respectively.

Master Fader

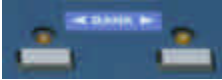


The Tascam's red Master Fader slider is a dedicated slider that accesses CEP's Master Volume mixer slider. In CEP, go to View>Show Mixer Window to launch the CEP mixer to see this in action.

Channel Faders



The Tascam's white Channel Faders will access both the CEP Mixer Window Track Faders as well as the Track Volume value in the Track Controls area of CEP (at the left of each track). The Tascam's four Channel Faders are governed by a BANK switch.



This BANK switch allows you to toggle the set of four Faders to control tracks 1-4, 5-8, 9-12...etc., all the way up to track 128.

Data Wheel



The Tascam's DATA WHEEL shuttles the cursor left or right in time across the Session Display. Since Cool Edit starts playback from the cursor position, this is a handy way to move your playback start position easily. The Data Wheel functions in Multitrack and Edit View.

Additionally, in the CEP Multitrack you can access any track's Pan control (see PANNING above).

Locate and Set



The Tascam has 2 LOCATE buttons and one SET button. In CEP you can use these for adding and navigating Cues in the Multitrack or in the Edit View. Cue point markers can be created under the current cursor position by hitting the SET button. To jump the cursor to next/previous Cue, hit the << or >> LOCATE button, or double-tap the Transport REW or F FWD button.

Null



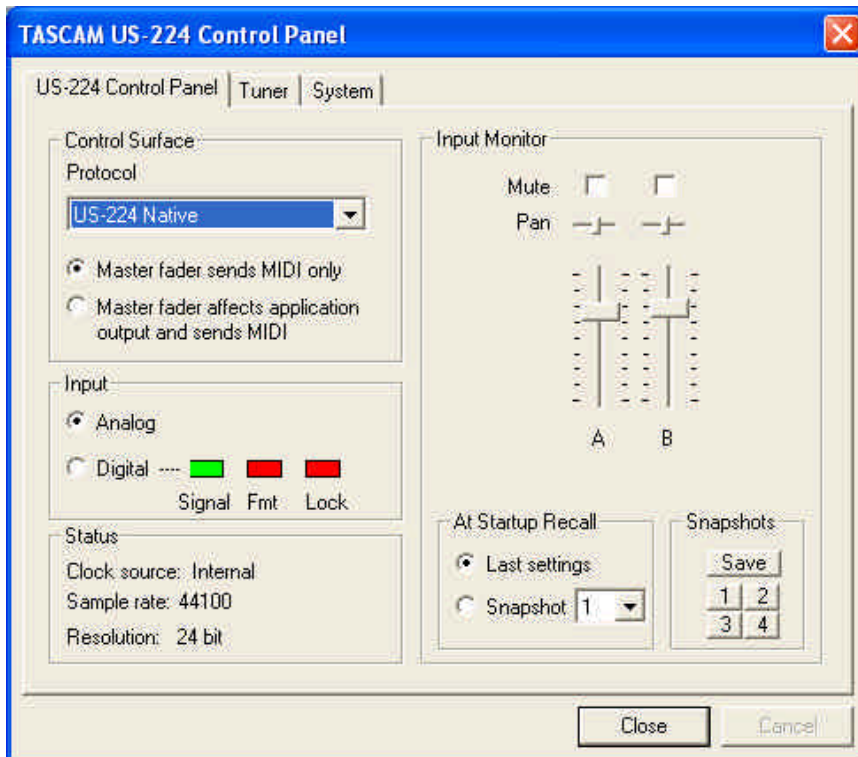
The Tascam's NULL button disengages the channel faders from controlling CEP's channel volumes and faders. This function is to allow you to move the Tascam faders to match the software's Track Volume settings. This is so that you can 're-calibrate' your Tascam faders in relation to the CEP faders/numeric

values without altering your current software settings.

Input Monitor



The INPUT MONITOR button toggles the 1 and 2 channel sliders from their current assignments to the sound card device's two analog inputs into the device's monitor. This only affects the level of the audio sent to the device's Monitor and Headphone outs and does NOT affect the levels seen by the software. This allows you to adjust the monitor level only of the input signal(s) without affecting the record input level. When in this Monitor Mode (when the button's indicator light is on), the 1 & 2 channels' Mute control also ONLY affects the monitor signal. You can see the monitor mixer by launching the Tascam software utility (which can be found in Windows' Control Panel).



Tascam/USB known issues:

Tascam advises NOT to have other devices active in a USB chain along with the Tascam while using it with audio software. It requires as much USB bandwidth as possible.

It is not advised to 'hot-swap' (plug or unplug the USB cable) the Tascam unit with Windows running nor to power on/off while you have a session in progress in the audio software. It is the best practice to boot Windows, then power on the Tascam, then launch the audio software. To shut down, reverse the process.

A few relevant notes regarding the CEP with the Tascam unit ...

Earlier versions of Cool Edit (Pro 1.X and 2000) are able to utilize the Tascam US-224 as a USB sound card device, but of course there are no functional controller features in these versions. Cool Edit Pro 2.0 and later does support the Tascam US-428 unit.