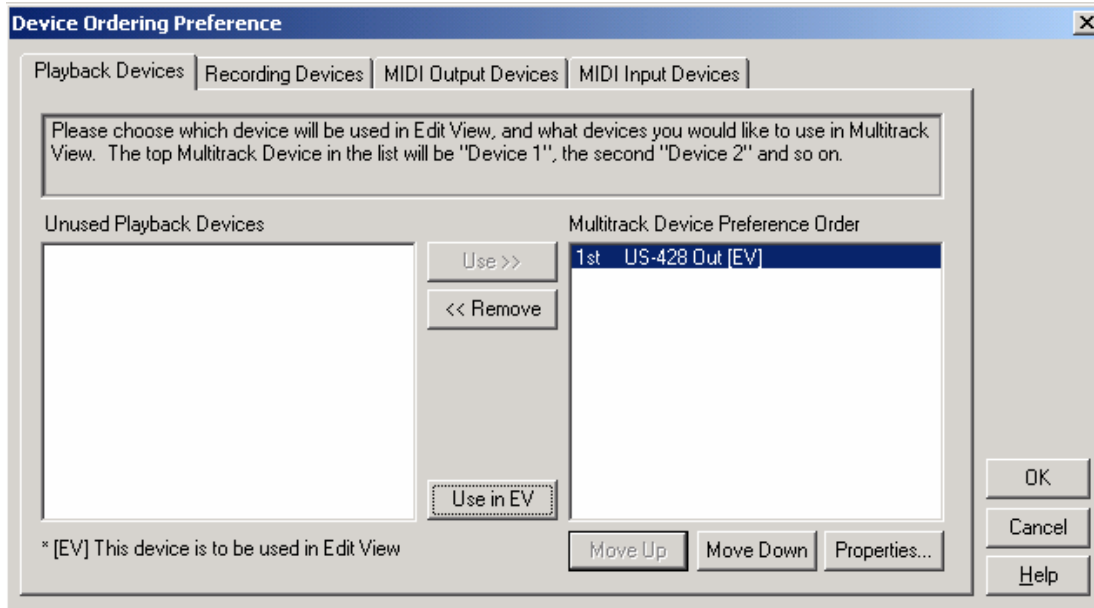


Using the Tascam US-428 with Cool Edit Pro 2



Cool Edit Pro 2 now includes support for the Tascam US-428 USB surface controller/sound card device. There is no additional software or installation process required for Cool Edit Pro 2 to access the Tascam unit once the unit is properly installed in Windows. You should only need to power on the US-428 unit and then launch Cool Edit Pro 2.

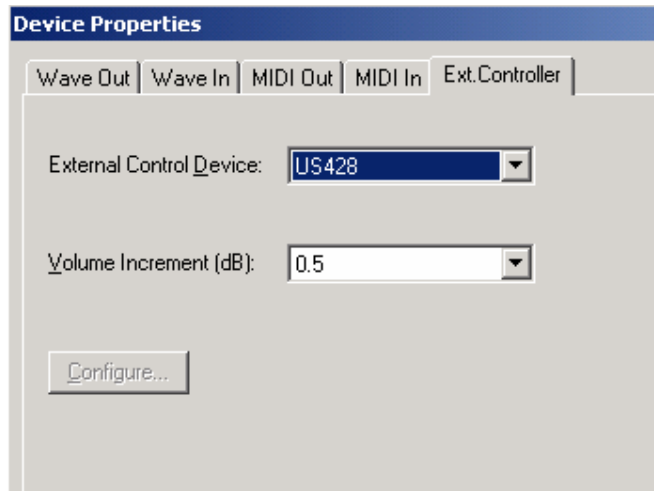
Go to Cool Edit Pro 2's Options-Device Order dialog



Here you can assign the US-428 analog input and output configuration. If you want to use the Tascam as your main sound card device, for example, you probably want to go to the Playback Devices tab and move the "US-428 Out" device to the right "Multitrack Preference Order" column and to the top of the list. Additionally, click on the "Use in EV" button to make this stereo output your Edit View playback device as well if desired.

Next, go to the Recording Device tab and do the same with the Tascam "US-428 A:B" input device if you want this to be your 'default' record device for Multitrack and Edit View. You also have the option of moving the "US-428 C:D" device input into the Multitrack Preference Order column if you want to be able to allow Cool Edit Pro 2 to be able to utilize it as an additional switch-able analog/digital input device.

You may also need to look in the Options-Device Preferences window and check in the "Ext. Controllers" tab window to be sure the US-428 is selected as the current active External Controller Device.



The following is a list of Tascam US-428 functions that are specific to Cool Edit Pro 2. Please also be sure to first become familiar with the basic operation of the Tascam unit by reading through your Tascam Owner's manual.

Transport Controls



REW, F FWD, STOP, PLAY, RECORD - there are dedicated buttons for each of these on the unit's transport section. In addition, if you Double-tap the << REW button it will place the cursor and view at the start of the session, file (in Edit View) or to next Cue to the left. Likewise, Double-tapping the >> FF button places the cursor and view to the end of the session, file (in Edit View) or next right Cue. A PAUSE function is available if you press the PLAY > button once again during playback. To resume playback, press the PLAY > button once again. The Transport controls will function for the Multitrack and Edit View.

Pan Control



There is one rotary PAN knob that can globally access the panning for any track in Cool Edit Pro 2's multitrack. This knob will adjust the Pan value for the currently selected track.

Mute/Solo Switches and LED's



Mute any track by using the MUTE button on the corresponding Tascam channel. Note that the SOLO button on the Tascam (to the right of the row of Track MUTE buttons) toggles the tracks' MUTE buttons between “Mute” and “Solo”. There are indicator lights on each Channel to indicate which is active for Mute or Solo as well.

Record Arming



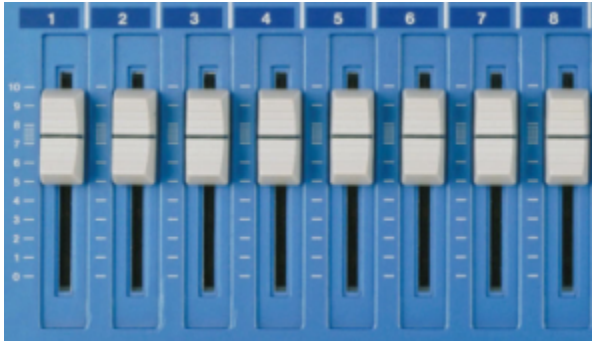
To toggle any track between “arm” and “disarm” for recording, hold down the REC button and simultaneously click the desired channel's SELECT button. The RECORD LED indicator glows red when the channel is armed for record. You can arm as many tracks as needed at any one time.

Master Fader



The Tascam's red Master Fader slider is a dedicated slider that accesses Cool Edit Pro's Master Volume mixer slider.

Channel Faders



The Tascam's white Channel Faders will access both the Cool Edit Pro Mixer Window Track Faders as well as the Track Volume value in the Track Controls area of Cool Edit Pro.

The Tascam's 8 Channel Faders are governed by a 3-way Bank switch:



This Bank switch allows you to toggle the set of 8 Faders to control tracks 1-8, 9-16, 17-24...etc., all the way up to track 128.

EQ Module Controls



The Tascam has a complete control section for accessing up to 4 bands of EQ on a channel, consisting of 3 knobs (GAIN, FREQ, EQ) and 4 selector buttons (HI, HI-MID, LOW-MID, LOW). This will access Cool Edit Pro's individual Track EQ for the selected track. Note that Cool Edit Pro 2 has a dedicated 3 band EQ on each track, therefore, the 4 Tascam buttons access the following Cool Edit Pro parameters:

HIGH = Cool Edit Pro Hi EQ controls

HI-MID and LOW MID = Cool Edit Pro Mid EQ controls

LOW = Lo Cool Edit Pro EQ controls

The GAIN, FREQ and EQ Tascam knobs access the same parameters for the selected Cool Edit Pro Track's EQ. Note that the Tascam EQ movements control the EQ parameters in Cool Edit Pro's Track Controls area, the Track Mixer EQ values, as well as the EQ Graphic if you have the Track EQ dialog opened.

Data Wheel



The Tascam's DATA WHEEL shuttles the cursor left or right in time across the Session Display. Since Cool Edit starts playback from the cursor position, this is a handy way to move your playback start position easily. It can also be used during Cool Edit Pro playback to “jog” through the audio forward or back. The Data Wheel functions in Multitrack and Edit View.

Locate and Set



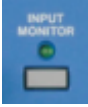
The Tascam has 2 LOCATE buttons and one SET button. In Cool Edit Pro you can use these for adding and navigating Cues in the Multitrack or in the Edit View. Cue point markers can be created under the current cursor position by hitting the SET button. To jump the cursor to next/previous Cue, hit the << or >> LOCATE button, or double-tap the Transport REW or F FWD button.

Null

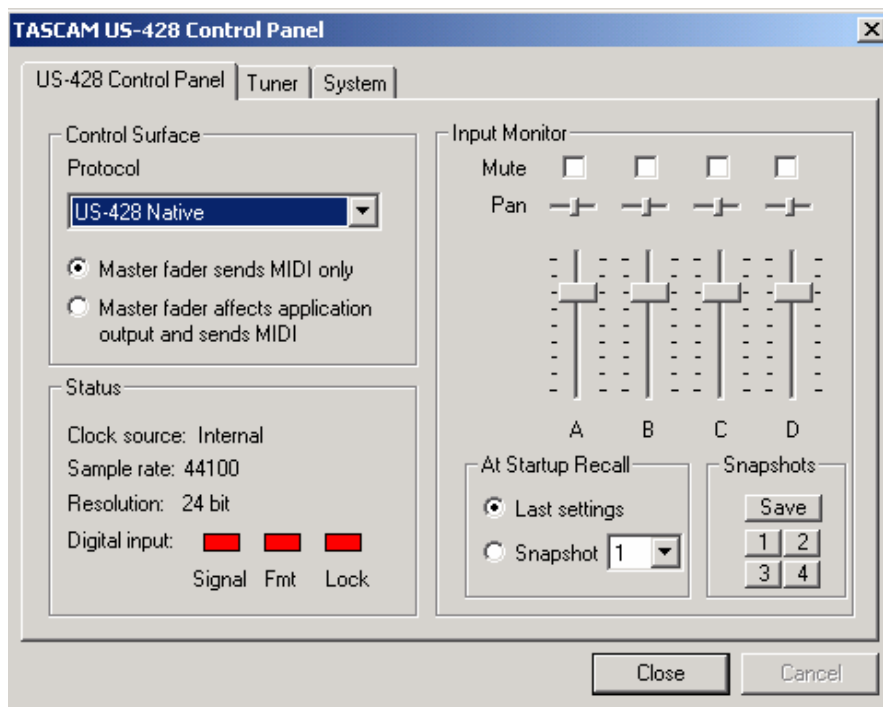


The Tascam's NULL button disengages the channel faders from controlling Cool Edit Pro's channel volumes and faders. This function allows you to move the Tascam faders to match the software's Track Volume settings. This is so that you can 're-calibrate' your Tascam faders in relation to the Cool Edit Pro faders/numeric values without altering your current software settings.

Input Monitor



The INPUT MONITOR button toggles the first 4 channel sliders from their current assignments to the sound card device's 4 analog inputs into the device's monitor. This only affects the level of the audio sent to the device's Monitor and Headphone outs and does not affect the levels seen by the software. This allows you to adjust the monitor level only of the input signal(s) without affecting the record input level. When in this Monitor Mode (when the button's indicator light is on), the first 4 channels' Mute and Pan controls also ONLY affect the monitor signal. You can see the monitor mixer by launching the Tascam software utility.



Unused Buttons in Cool Edit Pro

The following buttons have no direct correlation for Cool Edit Pro 2 and, therefore, do not have any assigned function within Cool Edit Pro 2. It is possible that we may assign these buttons to specific functions in a future version of the software, but for the Cool Edit Pro 2 version, these buttons will have no effect when accessed:

AUX1, AUX2, AUX3, AUX4
ASGN
F1, F2, F3

Tascam/USB known issues:

It is not advised to have other devices active in a USB chain along with the Tascam while using it with audio software. It requires as much USB bandwidth as possible.

It is not advised to 'hot-swap' (plug or unplug the USB cable) the Tascam unit with Windows running nor to power on/off while you have a session in progress in the audio software. With some systems, it is advisable to power the Tascam unit on BEFORE booting up the PC, and powering the Tascam unit off only AFTER Windows has been shut down. This practice ensures that Windows properly recognizes the device and does not become disrupted suddenly if the power status of the unit changes.

The Tascam C and D inputs are switch-able between analog and digital S/PDIF Ins by using the INPUT C + D button.



However, you may need to power the Tascam off and then back on for the inputs to actively switch. Do NOT switch this while recording or playing back in the audio software or it may crash the PC.

Notes:

Cool Edit Pro 2 is capable of recording from all 4 of the Tascam's analog inputs simultaneously into individual mono or stereo tracks.

Earlier versions of Cool Edit (Pro 1.X and 2000) are able to utilize the Tascam US-428 as a USB sound card device, but of course there are no functional controller features in these versions.

For additional support regarding the Tascam US-428, please visit:

<http://www.tascam.com>

or contact **Tascam Customer Service:**

Phone: (323) 726-0303 x617

[E-Mail: CustSer@tascam.com](mailto:CustSer@tascam.com)

--END--